

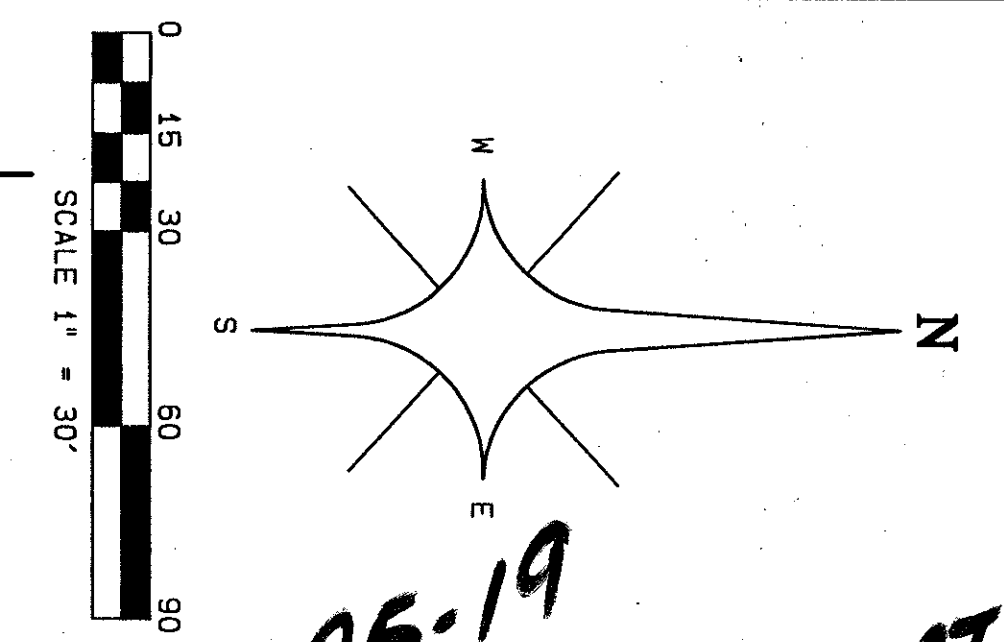
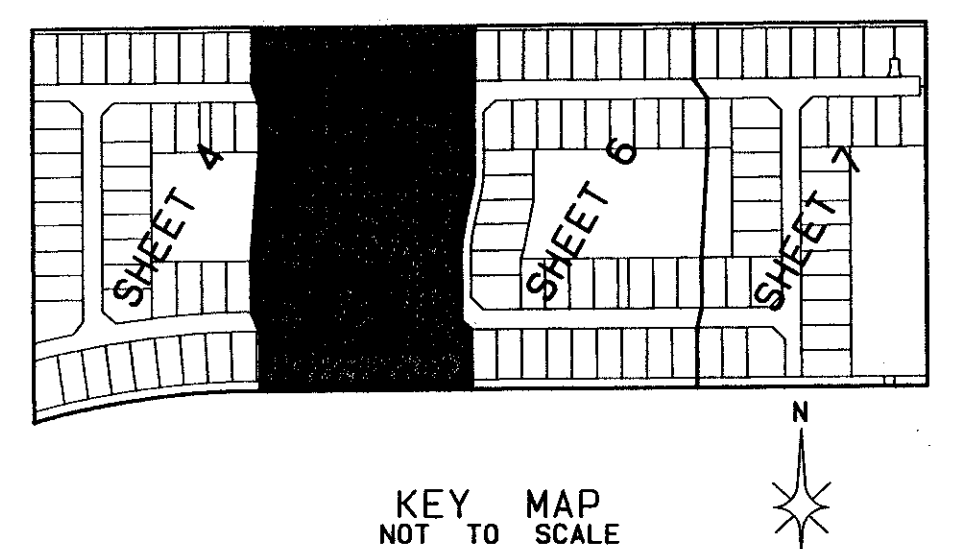
0683-005

76

# JONES - PARCEL "C-1"

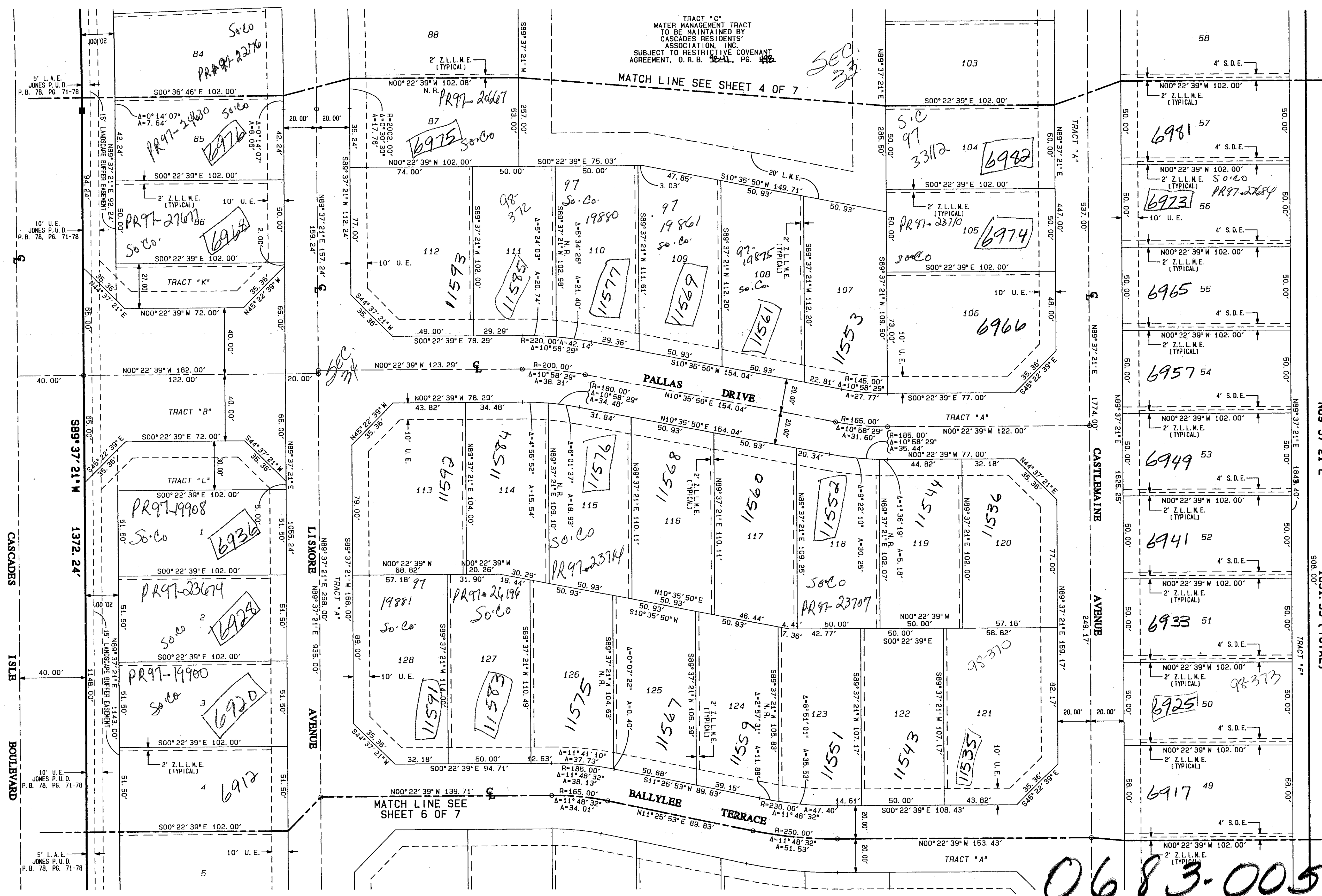
BEING A REPLAT OF PARCEL "C-1", TRACT "K-11" AND A PORTION OF TRACT "K-13", JONES P.U.D. AS RECORDED IN PLAT BOOK 78, PAGES 71 THROUGH 78 OF THE PUBLIC RECORDS OF PALM BEACH COUNTY, FLORIDA SITUATE IN SECTIONS 33 AND 34, TOWNSHIP 45 SOUTH, RANGE 42 EAST, PALM BEACH COUNTY, FLORIDA  
SHEET 5 OF 7  
JUNE, 1997

STATE OF FLORIDA } SS  
COUNTY OF PALM BEACH }  
THIS PLAT WAS FILED FOR  
RECORD AT \_\_\_\_\_ DAY OF  
THIS \_\_\_\_\_ MONTH AD 1997 AND  
DULY RECORDED IN PLAT BOOK  
\_\_\_\_\_ ON PAGES \_\_\_\_\_ AND  
\_\_\_\_\_  
DOROTHY H. WILKEN, CLERK  
CIRCUIT COURT  
BY: \_\_\_\_\_ DC



PET. 95-19  
ALOC. #0001  
NO SCHOOLS- RESTRICTIVE  
COVENANT  
5/3/3/K

- LEGEND:
- A = CENTRAL ANGLE/Delta
  - C = CENTERLINE
  - CH = CHORD
  - D.B. = DEED BOOK
  - D.E. = DRAINAGE EASEMENT
  - F.P. & L. = FLORIDA POWER AND LIGHT COMPANY
  - L = ARC LENGTH
  - L.A.E. = LIMITED ACCESS EASEMENT
  - L.M.A.E. = LAKE MAINTENANCE ACCESS EASEMENT
  - L.M.E. = LAKE MAINTENANCE EASEMENT
  - L.W.D.D. = LAKE WORTH DRAINAGE DISTRICT
  - N.R. = NON-RADIAL
  - N.T.S. = NOT TO SCALE
  - O.R.B. = OFFICIAL RECORDS BOOK
  - P.B. = PLAT BOOK
  - P.E. = PAGE
  - P.O.B. = POINT OF BEGINNING
  - P.O.C. = POINT OF COMMENCEMENT
  - R = RADIUS (RADI)
  - R.F. = RADIAL TO FRONT LOT LINE
  - R.R. = RADIAL TO REAR LOT LINE
  - R/W = RIGHT OF WAY
  - S.D.E. = SWALE DRAINAGE EASEMENT
  - U.E. = UTILITY EASEMENT
  - W.C. = WITNESS CORNER
  - Z.L.L.M.E. = ZERO LOT LINE MAINTENANCE EASEMENT
  - ⊙ = PERMANENT CONTROL POINT (PCP)
  - PCP #4380
  - = PERMANENT REFERENCE MONUMENT (PRM)
  - SET PRM #4360



SUBMISSION # JONES Parcel C-1  
BOOK 80  
PAGE 76  
FLOOD MAP #2004  
FLOOD ZONE A-H  
ZONING PDD  
MAP # 50  
ZIP CODE 33457  
PUD NAME Jones Parcel C-1

0683-005

80/76

PROFESSIONAL SURVEYORS AND MAPPERS  
ATLANTIC - CARIBBEAN MAPPING, INC.  
3062 JOC ROAD - GREENACRES, FLORIDA 33467  
(561) 964-7864, FAX (561) 964-1969